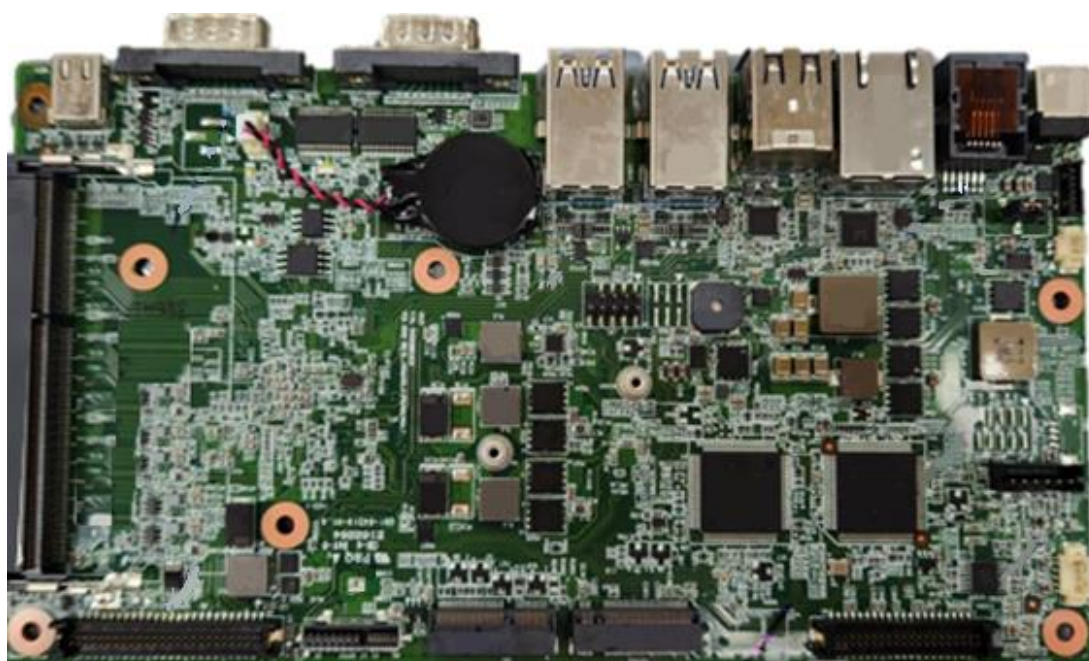


X7CE Motherboard

- ◇ Intel® Celeron® J1900 Processors.
- ◇ Rich I/O connectivity: Suitable for POS system.
- ◇ Designed for fanless applications.

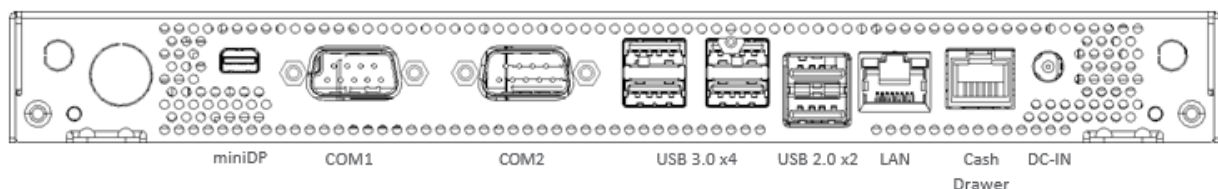
Board Placement



X7CE Specifications

	Main Board Name	X7CE
Main Board	CPU	Celeron® J1900 (4 cores, up to 2.42 GHz, max TDP 10 Watt)
	Chipset	Intel® HD Graphics
	System Memory	1 x SO-DIMM DDR3L 1067/1333MHz, Max. 8GB
Storage Device	Interface	2 x SATA (3.0Gb/S)
	HDD / SSD	1 x 2.5" SATA HDD / SSD 1 x M.2 2242 SSD Slot
I/O Ports	COM	COM 1 : 1 x DB9 RS232 (RI / 5V / 12V by BIOS selection) COM 2 : 1 x DB9 RS232 (RI / 5V / 12V by BIOS selection)
	USB	4 x USB 3.0, 2 x USB 2.0
	LAN	1 x Gigabit Ethernet by RJ-45, support Wake on LAN
	Cash Drawer	1 x RJ12, support 12V / 24V DC cash drawer
	Audio	1 x Watt Speaker (R Channel)
	Video	1 x Mini DisplayPort
	DC-in	19V DC input, 1 x 2pins jack
	Power Button	1 x Power button
Internal Connector	COM	COM 3: 1 x RS232 pin-header (no power, Option) COM 4: 1 x RS232 pin-header (no power, Option) COM 5: 1 x RS232 pin-header (5V for VFD) COM 6: 1 x RS-232, Internal reserve
	50pin pin-header and LED)	1 x 50 pin-header (EDP, COM5 (12V, VFD), USB2.0*3, Power Switch
	Audio	1 x Pin Header for Speaker
	Battery	1 x Pin Header
	Cash Drawer Power	Pin header 12V/24V
	Power Switch and LED	Pin Header
	Environmental	Operating Temperature
	Storage Temperature	-20~ 60°C
	Humidity	20% to 85% RH (non condensing)
Others	Expansion Slot	M.2 2230 E-key slot x 1 (for Wi-Fi module, included USB2.0 signal) M.2 2242 SSD Slot x 1
	Communication	Wireless LAN module, M.2 2230 E-key (Optional)
	Power Supply	External adapter, 19V DC input, 65Watt

I/O Interface



All information contain in this document is subject to change without prior notice.